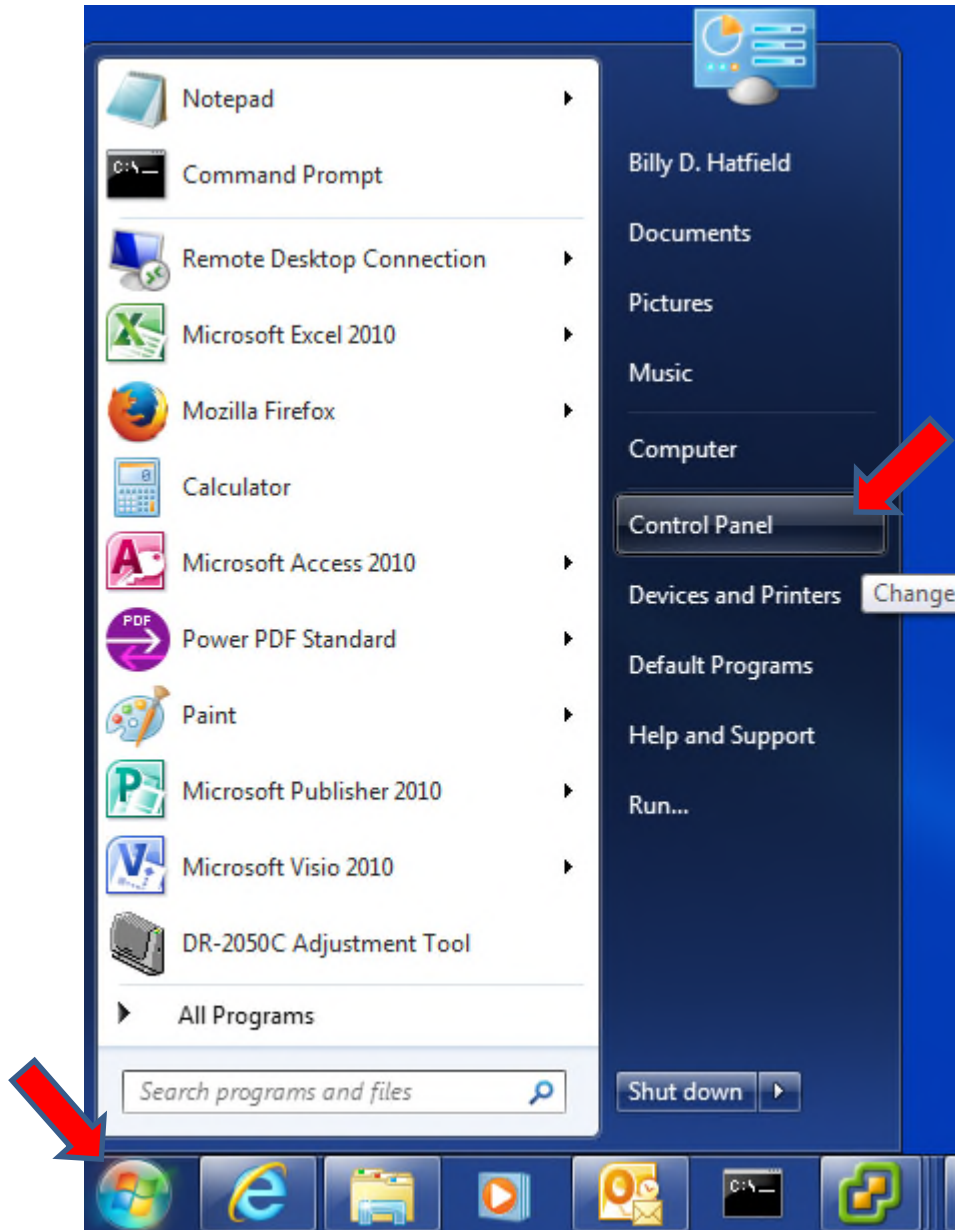
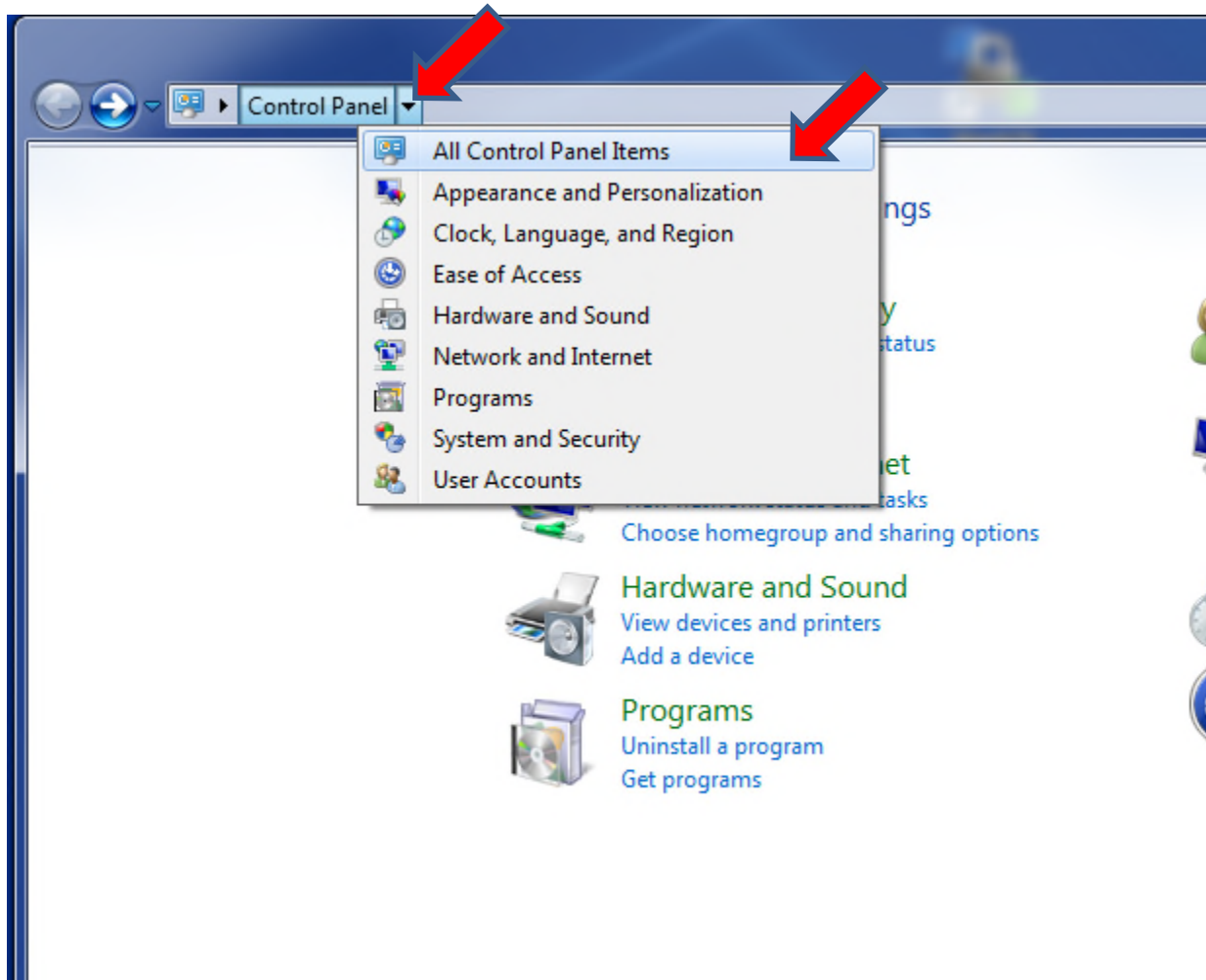


Instructions for setting TLS 1.2 for Windows 7 running Internet Explorer 9 or 10

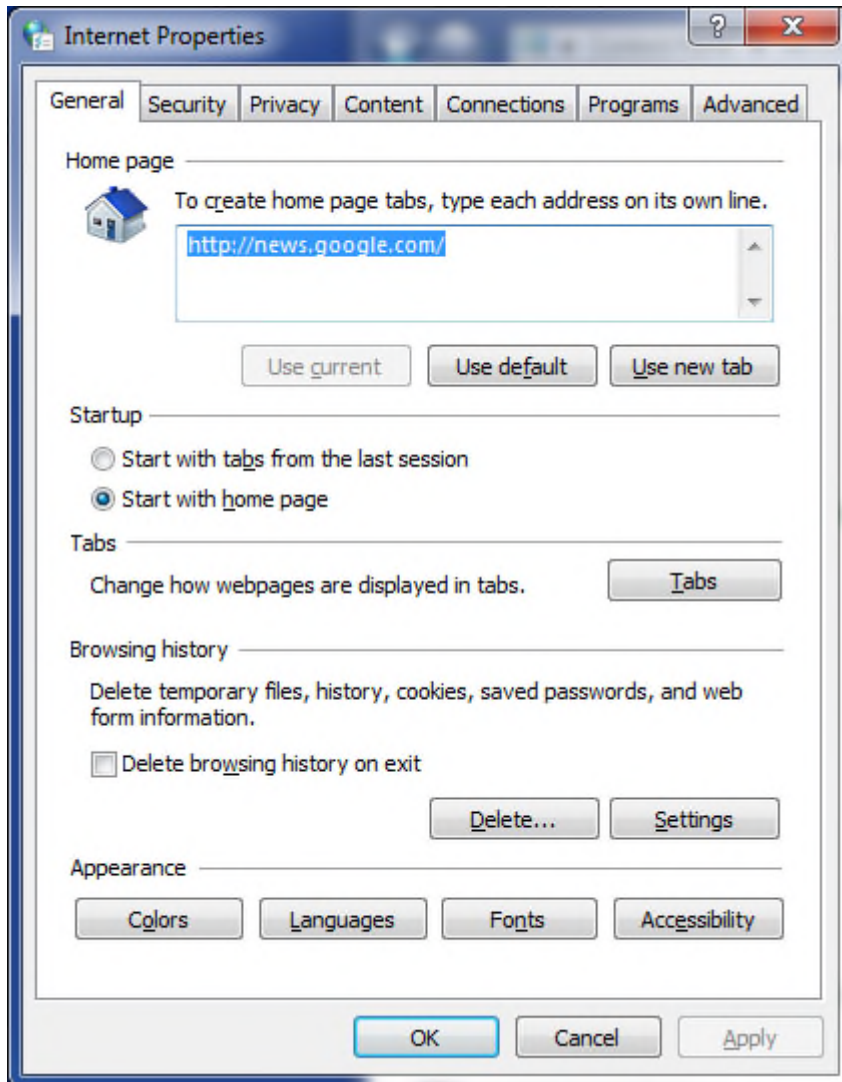
Click the Windows button, and then click the Control Panel option:



Next Click the arrow next to “Control Panel” and click to select “All Control Panel Items”:



Now Double-click "Internet Options". This window will appear:



Click the “Advanced” tab. In the Settings window, scroll down to the end of the options and click the box next to “Use TLS 1.2” and click “OK”:

